

# HKBU FACTS & FIGURES 2019/20

年度香港浸會大學資料及統計數字



## Contact Information 聯絡資料

Hong Kong Baptist University 香港浸會大學  
Kowloon Tong 九龍塘  
Kowloon 九龍  
Hong Kong 香港

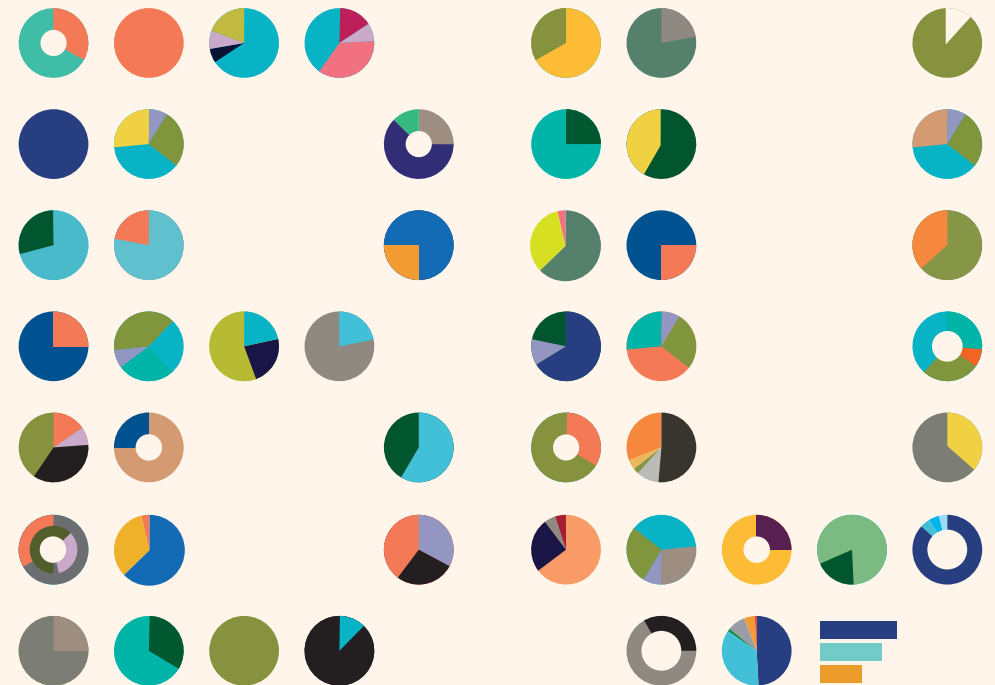
**Tel 電話** : (852) 3411 7400

**Website 網址** : [www.hkbu.edu.hk](http://www.hkbu.edu.hk)

## Campus Map 校園地圖



Compiled by Office of Institutional Research and Planning  
校務研究及策劃處編製  
January 2021 二零二一年一月



## Contents 目錄

01	Introduction 簡介
02-03	Faculties, Schools, Academy, and Departments 學院及學系
04	HKBU at a Glance 浸大一覽
	HKBU has set out a ten-year Institutional Strategic Plan (2018-28) to position the University as a research-led liberal arts institution of global significance, one that is firmly anchored to the needs of the local communities around us, the rapid development of the nation, and the global landscape beyond. To meet our vision and fulfil our aspirations, we will focus our energies and resources on three cornerstone strategic priorities:
	香港浸會大學已釐定為期十年的策略發展計劃 (2018-28)，旨在讓大學成為國際上舉足輕重的研究型博雅學府，以重點回應本地社區需要，並致力促進國家以至全球的高速發展。為了實現我們的願景，大學將會把資源集中於三個優先策略：
05-13	Strategic Priority 1 Best student experience 優先策略 1 最佳學習體驗
14-20	Strategic Priority 2 Research excellence 優先策略 2 卓越研究
21-26	Strategic Priority 3 Capacity 優先策略 3 增強實力
27-29	School of Continuing Education 持續教育學院
30-33	Major Milestones 里程碑

## Introduction 簡介

### Motto

Faith and Perseverance

### Vision

To be a leading liberal arts University in Asia for the world delivering academic excellence in a caring, creative and global culture.

*Refreshed in September 2017*

### Mission

HKBU is committed to academic excellence in teaching, research and service, and to the development of the whole person in all these endeavours built upon the heritage of Christian higher education.

### 校訓

篤信力行

### 願景

成為一所領先亞洲、立足世界的博雅大學，並在關愛、創意、國際化的氛圍中發揮學術卓越。

於2017年9月修訂

### 使命

香港浸會大學在教學、研究及社會服務等範疇力臻至善，秉承基督教高等教育的理念，推行全人教育。





### Faculty of Arts 文學院



- Chinese Language and Literature 中國語言文學系
- English Language and Literature 英國語言文學系
- Humanities & Creative Writing 人文及創作系
- Language Centre 語文中心
- Music 音樂系
- Religion and Philosophy 宗教及哲學系
- Translation, Interpreting and Intercultural Studies 翻譯、傳譯及跨文化研究系



### Faculty of Science 理學院

- Biology 生物系
- Chemistry 化學系
- Computer Science 計算機科學系
- Mathematics 數學系
- Physics 物理系

### School of Business 工商管理學院



- Accountancy and Law 會計及法律系
- Economics 經濟系
- Finance and Decision Sciences 財務及決策學系
- Management 管理學系
- Marketing 市場學系



### Faculty of Social Sciences 社會科學院

- Education Studies 教育學系
- Geography 地理系
- Government and International Studies 政治及國際關係學系
- History 歷史系
- Sport, Physical Education and Health 體育、運動及健康學系
- Social Work 社會工作系
- Sociology 社會學系



### School of Chinese Medicine 中醫藥學院



### Academy of Visual Arts 視覺藝術院

### School of Communication 傳理學院



- Academy of Film 電影學院
- Communication Studies 傳播系
- Journalism 新聞系



### School of Continuing Education 持續教育學院

- College of International Education 國際學院

## 浸大一覽

### HKBU at a Glance

Postgraduate  
研究生及碩士課程

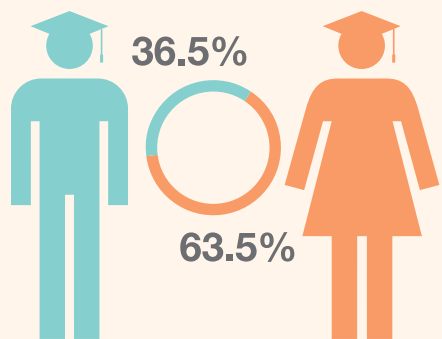
**3,238**  
Student Intake  
收生人數

**4,471**  
Enrolment  
學生人數

Undergraduate  
本科課程

**2,152**  
Student Intake  
收生人數

**7,089**  
Enrolment  
學生人數



**358** Exchange Partners  
學生交流計劃夥伴

**289** Number of Incoming Exchange/  
Visiting Students to HKBU  
到浸大交流的海外學生人數

**360** Number of Outgoing Exchange/  
Visiting Students from HKBU  
到海外交流的浸大學生人數

Research Funding 研究資助  
(in HK\$'000 以千港幣計)

University Total 大學總數

HK\$  
**969,548**

No. of student participation in  
entrepreneurship activities  
參與創業活動的學生人數

**8,502**

Staff 職員

Full-time 全職

**2,635**

Part-time 兼職

**553**

Place of Origin of  
Professoriate Staff  
教授級人員之出生地

**49.1%**  
Hong Kong  
香港

**50.9%**  
Non-local  
非本地

Strategic Priority 優先策略

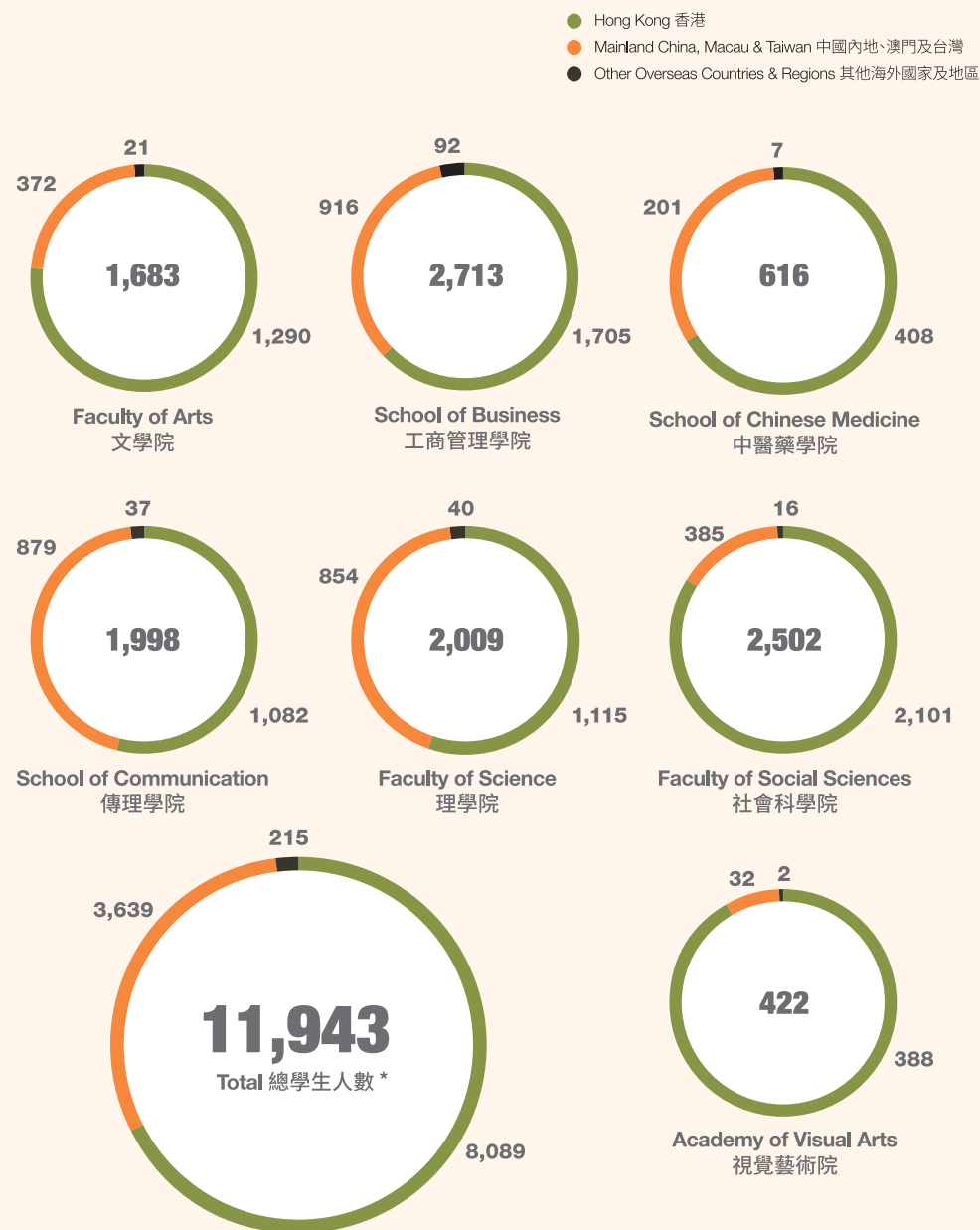
# 1 Best Student Experience

最佳學習體驗



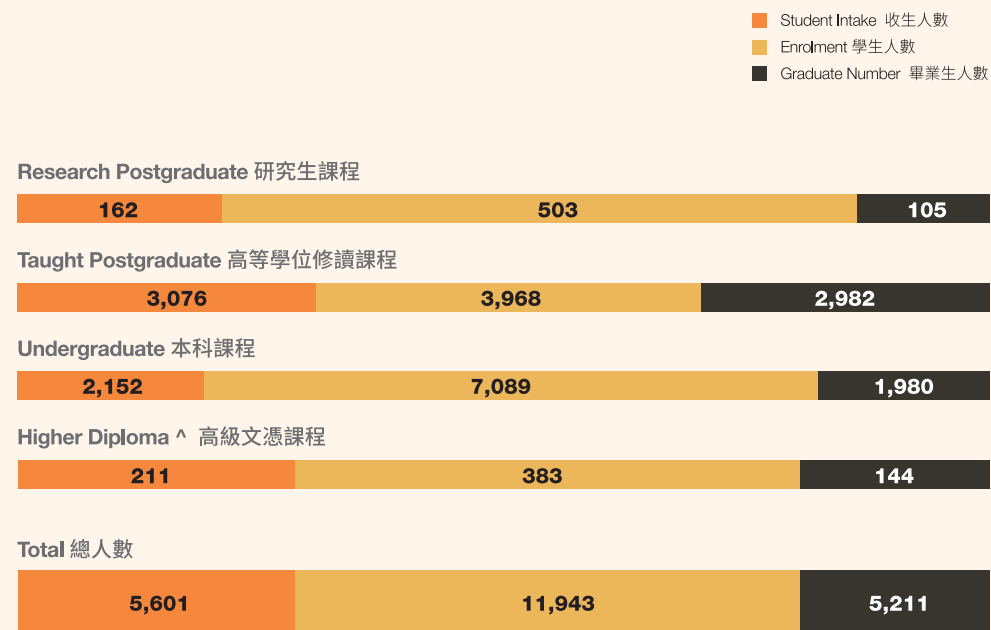
## Student Enrolment by Faculty / School / Academy and by Place of Origin

以學院及學生出生地區分類之學生人數

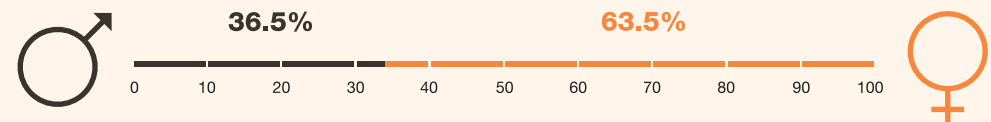


## Student Intake, Enrolment, and Graduate Number by Level of Study

以課程類別分類之收生、學生及畢業生人數



## Gender Distribution 男女生比例

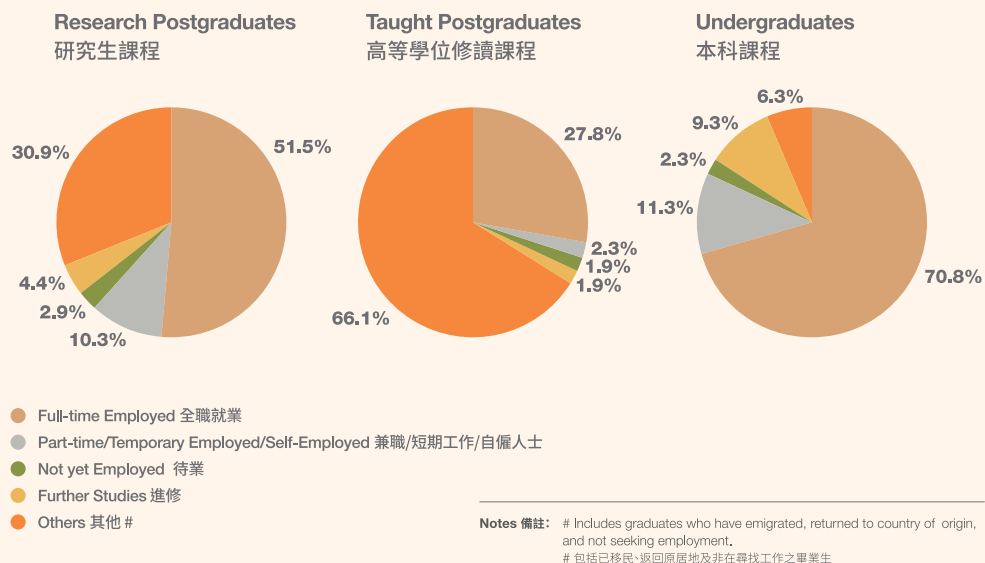


### Notes 備註:

- Student intake and enrolment numbers are as of 31 October 2019.
- Graduate numbers are as of September 2020.
- Students of the School of Continuing Education (SCE) are excluded.
- \* Double-degree students in BA (Hons) in English Language and Literature and BEEd (Hons) in English Language Teaching, offered by the Department of English Language and Literature and the Department of Education Studies, are counted under Faculty of Arts. Undergraduate students enrolled in the Diploma in Education programme are counted under both the Faculty of Social Sciences and the host Faculty/School/Academy of their major programme.
- ^ The Higher Diploma in Creative Film Production is offered by the Academy of Film. As the administration of the programme is handled by SCE, the intake and enrolment figures are based on SCE's reporting date (as of 30 September 2019).
- 收生人數和學生人數統計截至2019年10月31日
- 畢業生人數統計截至2020年9月
- 持續教育學院的學生不包括在內
- \* 修讀英國語言文學系和教育學系合辦的「英國語言文學及英語教學(雙學位課程)」的學生將計入文學院的學生人數內。修讀教育文憑課程的本科生將計入社會科學院及其主修課程所屬的學院
- ^ 創意電影製作高級文憑課程由電影學院開辦。由於該課程的行政工作由持續教育學院負責，因此收生人數和學生人數統計均截至持續教育學院的報告日期(2019年9月30日)

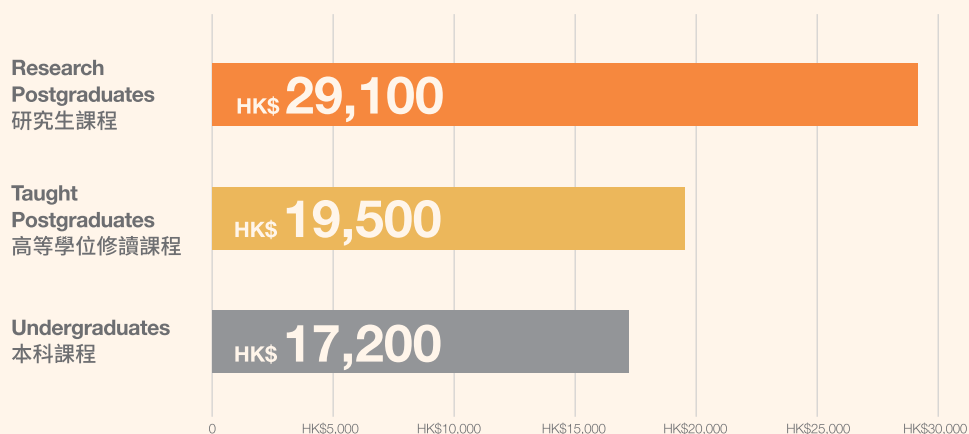
## ■ Employment Statistics (as a % of full-time graduates who responded to the Graduate Employment Survey in 2019)

就業概況 (以佔回覆2019年度就業概況調查之全日制課程畢業生人數比率計)



## ■ Full-time Graduates' Average Monthly Salary

全日制畢業生每月平均薪酬



## ■ HKBU Service-Learning

浸大服務學習

HKBU endeavours to further develop service-learning and provide at least one opportunity for every willing student to participate by 2023. To realise this plan, the University has established the Centre for Innovative Service-Learning (CISL) in December 2017 to connect academic departments to community partners, facilitate the formation of interdisciplinary teams and provide appropriate training and support for students and staff.

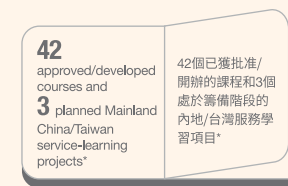
CISL is committed to supporting the development of academic service-learning opportunities that meet community needs and foster social changes. Through service-learning, we endeavour to deliver the best student experience to enhance whole-person development, promote civic engagement and instil in students a sense of purpose.

香港浸會大學致力為學生提供最佳學習體驗，於2017年12月成立了創新服務學習中心，與校內各學系合作，在正規課程中推廣服務學習。我們的目標，是於2023年能為每名自願參與的本科生，提供最少一次服務學習和創新活動的機會。

創新服務學習中心致力推廣服務學習，讓學生應用學術專業、通用知識和技能，學以致用，為社會上有需要人士提供服務，協助回應社區需要，改善他們的生活，並從中學習和成長。



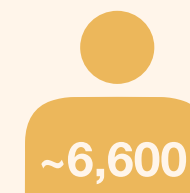
No. of Undergraduate Students Enrolled in Service-Learning  
修讀服務學習的本科生人數



No. of Service-Learning Subject Offerings  
開辦的服務學習科目數目



No. of Service Hours  
服務時數



No. of Service Users  
服務人數

**Note 備註:** \* Due to social unrest and COVID-19, only 30 service-learning courses were delivered, and all service-learning projects in Mainland China, Taiwan, and overseas were cancelled in 2019-20. Some courses were offered more than once within the same year.  
\* 由於社會動盪和疫情的影響，2019-20學年僅開辦了30個服務學習課程。所有於內地、台灣和海外進行的服務學習項目均已取消。部份科目一年開辦超過一次。

## Service-Learning Highlights 服務學習亮點

### HUMN 3025 Chinese Song Lyric Writing

The course HUMN 3025 Chinese Song Lyric Writing introduces students to the world of Cantopop, the beauty of Chinese lyrics and current trends in the contemporary Hong Kong music industry.

Dr Chow Yiu Fai, the course instructor as well as a prominent lyricist himself, believes that popular music should not be only about romance, but it should also be used as a disseminative tool to spread love, care and concern for the community. Thus, he decided to inject a service-learning element into his course—which has long been popular and attracted students from all majors—with the aim to let students craft lyrical pieces that inspire and promote social change and bring honour to music.

### HUMN 3025中文歌詞創作班

「HUMN 3025中文歌詞創作班」帶學生走進粵語流行曲的世界，向他們展示中文歌詞的美感，並介紹當代香港音樂行業的最新趨勢。

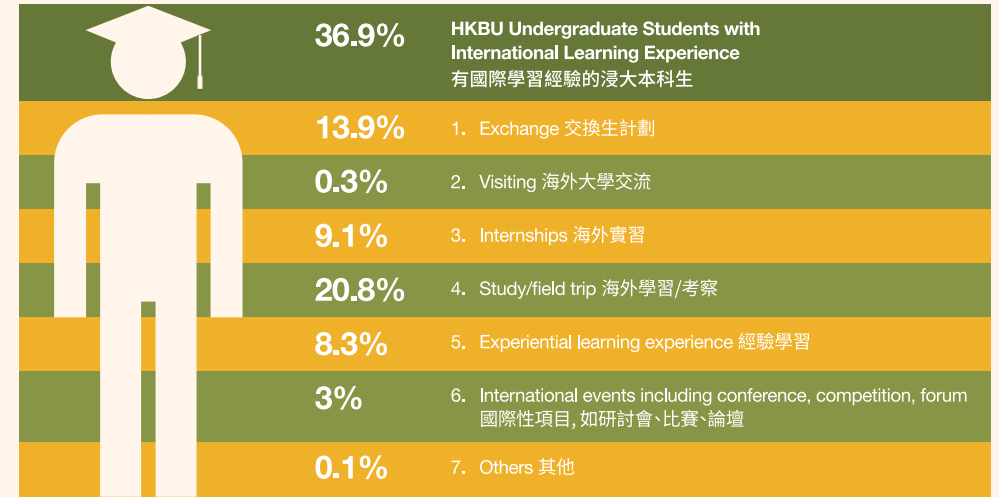
課程導師兼著名填詞人周耀輝博士認為流行音樂不單止包含浪漫元素，還應該作為一種傳播工具，向社會傳揚愛心和關懷。因此，他決定在課程中注入服務學習元素。本課程一直深受歡迎，吸引來自不同學系的學生報讀。服務學習元素能讓學生創作抒情作品來激發和促進社會轉變，讓音樂發光發熱。



For the online concert by the 2019/20 class, please visit  
如欲重溫2019/20學年的線上音樂會，請瀏覽



## International Learning Experience of Students 國際學習體驗

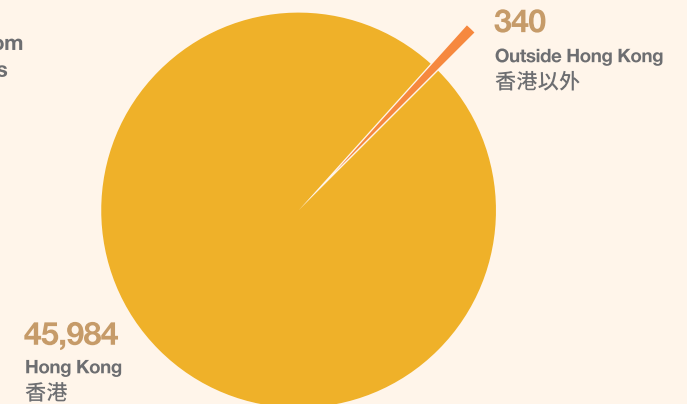


**Notes 備註:** Students who have more than one type of non-local learning experience are counted once. For each type of experience, students participated in more than one time are counted once. As such, figures may not add up to the total.  
參與超過一種國際學習經驗的學生將被計算一次。每種類別中，參與超過一次的學生將被計算一次。因此，各類別的人數可能不等於總數

## Co-curricular and Extra-curricular Activities 課外活動

No. of undergraduate student participation in outside classroom co- and extracurricular activities  
參與課外活動的本科生人次

Total: 46,324



## III Cultural Activities and Connections 文化活動與聯繫

The HKBU Symphony Orchestra, together with a host of ensembles, is part of a wonderful musical feast which also includes workshops and masterclasses from Classical to World Music.



香港浸會大學交響樂團與多個樂團帶來精彩絕倫的音樂盛宴，合辦多個工作坊和大師班，涵蓋古典音樂以至世界音樂。



The Jao Tsung-I Academy of Sinology and Mr. Simon Suen and Mrs. Mary Suen Sino-Humanitas Institute support Chinese Studies and Sinology through unique library collections, lectures, publishing, and international conferences.

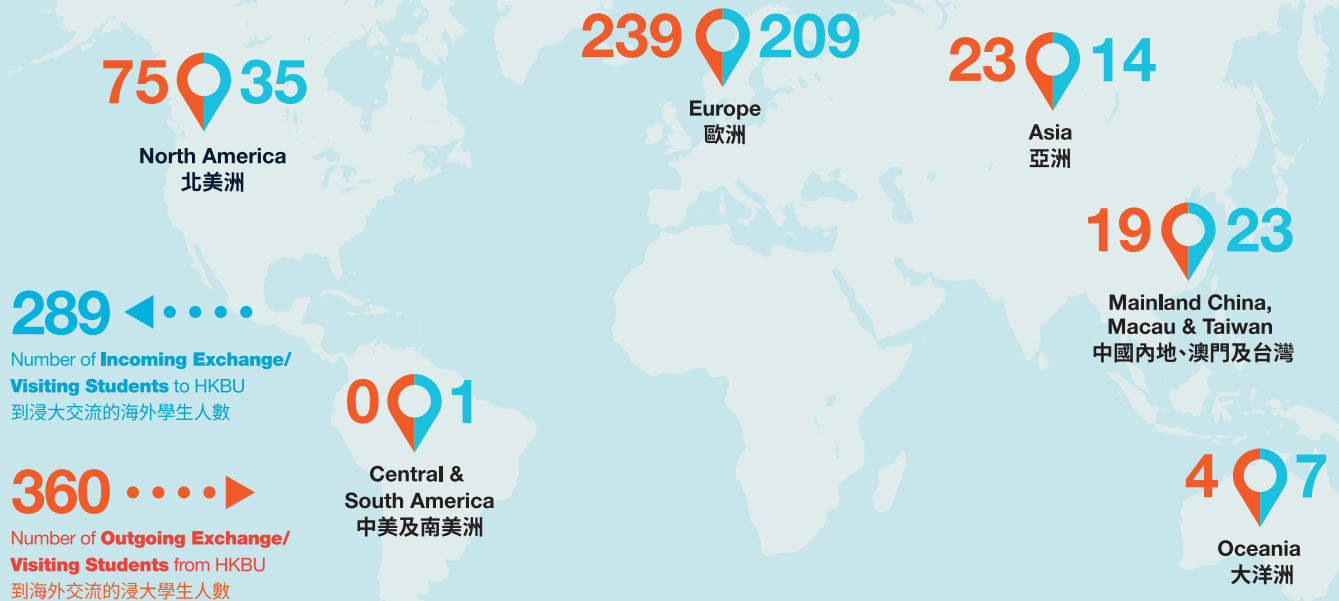
饒宗頤國學院和孫少文伉儷人文中國研究所透過獨一無二的圖書館珍藏、演講、出版項目和國際會議推動國學和漢學研究。

The Dream of the Red Chamber Award is the first novel prize in Hong Kong awarded to writers in Chinese from around the world. It is awarded every two years, with the goal of encouraging the publication of quality novels in Chinese.



紅樓夢獎是香港首個給予全球華文作家參加的長篇小說獎。獎項每兩年頒發一次，旨在鼓勵出版優秀的華文小說。

## 358 Exchange Partners 學生交流計劃夥伴



## III Internationalisation and Exchange Partnerships 國際化及交流夥伴

### Overseas Double/ Combined Degree Programmes 海外雙學位學士課程



Simon Fraser University -  
Business Administration  
工商管理

Simon Fraser University -  
Mathematics and Statistics /  
Actuarial Science  
數學及統計/精算學



KOZMINSKI UNIVERSITY

Kozminski University -  
Business Administration  
工商管理



University of Queensland -  
Communication / Journalism  
傳播/新聞學



Sciences Po Lyon -  
European Studies French Stream and  
Diplôme de Sciences Po Lyon  
(equivalent to Master's degree)  
歐洲研究(法文)/里昂政治學院頒授文憑  
(等同於碩士學位)



University of Missouri

The University of Missouri -  
Communication / Journalism  
傳播/新聞學



Sciences Po Bordeaux -  
European Studies French Stream and  
Diplôme de Sciences Po Bordeaux  
(equivalent to Master's degree)  
歐洲研究(法文)/波爾多政治學院頒授文憑  
(等同於碩士學位)



# 2

STRATEGIC PRIORITY 優先策略

## Research Excellence

卓越研究

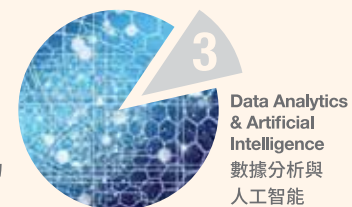
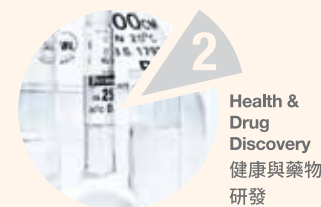
### 卓越研究

## Research

### Strategic Clusters of Strengths 策略研究領域

Encompassing HKBU's research strengths, the University has identified three strategic clusters to enhance the University's research coherence and foster the alliances of research strengths.

香港浸會大學聚焦三大策略研究領域，增強大學研究的連貫性，匯聚研究實力。



### University-wide Interdisciplinary Research Labs 跨學科研究實驗室

To organise cross faculty research along the directions of three strategic clusters, the University has formed 6 research Labs to underpin interdisciplinary and theme-based research, for promoting research excellence and knowledge/technology transfer, and for attracting global collaboration.

大學朝著三大策略研究領域的方向籌劃跨學科研究，成立六所嶄新的研究實驗室支援跨學科和主題研究項目，使研究工作更臻卓越，並促進知識及技術轉移，吸引國際夥伴交流合作。

Each laboratory aims to be a world class research hub for vibrant intellectual interactions where researchers and collaborators can explore and discover novel solutions for grand challenges in the following focused themes:

六所實驗室各自以成為世界級研究中心為目標，從而激發積極互動的學術交流。研究人員和合作夥伴可於以下主題實驗室中探索和尋找應對嚴峻挑戰的創新解決方案：

- **Augmented Creativity Laboratory:** augmenting human creativity with artificial intelligence and human-machine collaboration  
**創造性智能實驗室:** 透過人工智能和人機協作增強人類的創造力
- **Computational Medicine Laboratory:** data driven innovation on therapeutics and new drug discovery  
**計算醫藥學實驗室:** 採用數據技術推行創新療法和研發全新藥物
- **System Health Laboratory:** behavioural and wellbeing functioning mechanisms of complex systems including life, environment, human society and web media  
**系統健康研究實驗室:** 研究生命、環境、人類社會和網絡媒體等複雜系統的行為和健康運作機制

- **Smart Society Laboratory:** smart decision making in social policies and organisation  
**智能社會實驗室:** 在社會政策和組織中作明智決策
- **Data Economy Laboratory:** new theories, business practices and new technologies in today's networked economy with data assets  
**數據經濟實驗室:** 研究當今網絡經濟與金融環境下的新興理論、商業實踐和新技術
- **Ethical and Theoretical AI Laboratory:** basic theories of ethical artificial intelligence, with a particular emphasis on machine behaviour studies, as well as central issues in AI verifiability and AI interpretability  
**人工智能的倫理與理論實驗室:** 研究倫理人工智能的基礎理論, 重點研究機器行為, 以及人工智能可驗證性與可解釋性的核心議題



For more information about the Interdisciplinary Research Labs, please visit  
如欲了解有關跨學科研究實驗室的詳情, 請瀏覽

## Groundbreaking Research 研究亮點聚焦



### Aptamer: Molecular Insight & Translational Theranostics

An aptamer research project led by Professor Lyu Aiping, Dean of the School of Chinese Medicine and the Dr. Kennedy Y.H. Wong Endowed Chair of Chinese Medicine, has been awarded a grant of HK\$50 million from the Theme-based Research Scheme 2020/21 of the Research Grants Council. The project received the highest funding amount among the seven projects supported by the Scheme this year. With leading experts from Hong Kong, Mainland China and the US on board, the team has set itself on a mission to optimise the methodology for aptamer selection. The researchers also hope to deepen our understanding of the mechanism of aptamer-target interactions, and develop novel aptamer-based strategies for the diagnosis and treatment of pancreatic cancer.

### 核酸適配子的分子機理及用於診斷和治療的轉化研究

由中醫藥學院院長暨黃英豪博士中醫藥講座教授呂愛平教授領導的團隊, 獲研究資助局2020/21年度主題研究計劃撥款港幣5,000萬元, 進行核酸適配子的研究。該研究項目所獲得撥款額是今年獲主題研究計劃資助的七個研究項目之中最高的一個。研究團隊匯集香港、內地和美國的頂尖專家, 冀能合力優化適配子的篩選方法, 深入了解適配子與靶標的相互作用機制, 並以適配子為基礎研發診斷和治療胰腺癌的嶄新策略。



For more information, please visit  
如欲了解更多, 請瀏覽

## Research Facilities 研究設施

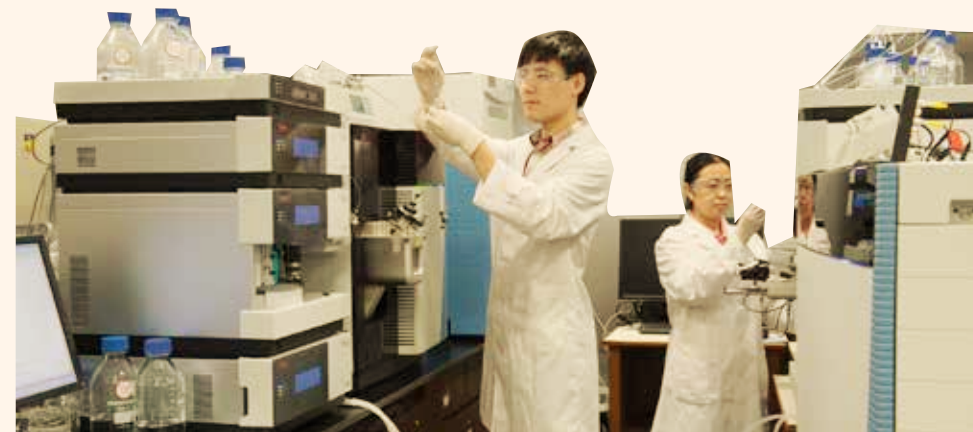
The University has established over **50** Research Centres and Institutes to nurture excellence in a range of focus areas and to cultivate interdisciplinary research.  
大學擁有超過50個研究中心和研究所, 於一系列重點領域中培育卓越人才, 為跨學科研究提供培訓。

### State Key Laboratory

State Key Laboratory of Environmental and Biological Analysis (SKLEBA) was established in 2013 in partnership with State Key Laboratory of Environmental Chemistry and Eco-toxicology in Research Center for Eco-Environmental Sciences, Chinese Academy of Sciences (RCEES, CAS). It is an interdisciplinary research platform focusing on three correlated fields, namely environmental science, biological science and material science.

### 國家重點實驗室

環境與生物分析國家重點實驗室於2013年與中國科學院生態環境研究中心「環境化學與生態毒理學國家重點實驗室」成為合作夥伴。此跨學科研究平台專注於三個相關領域 — 環境科學、生物科學和材料科學。



## Offshore Research Institute 離岸研究所

HKBU Institute for Research and Continuing Education (IRACE)  
香港浸會大學深圳研究院



For more information on our research facilities, please visit  
如欲了解本校所有研究設施, 請瀏覽

**a 162,312**  
University Grants  
Committee (UGC) Grants  
政府(教資會)資助



**b 290,699**  
Research Grants Council (RGC)  
研究資助局撥款

**b1 24,320**  
Collaborative Research Fund  
協作研究金

**b2 127,684**  
Others (including Direct Allocation)  
其他 (包括直接撥款)

**b3 138,695**  
General Research Fund  
優配研究金

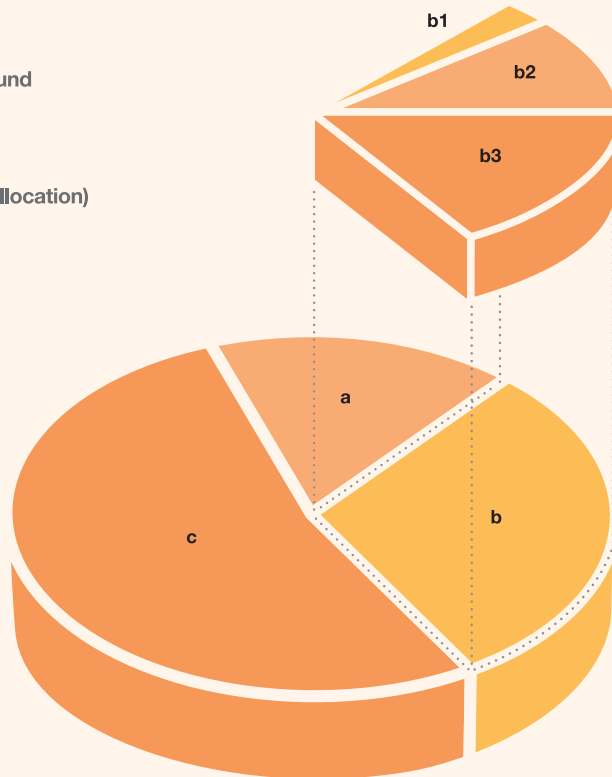


**c 516,537**  
Other Funds  
其他資助



**969,548**  
University Total  
大學總數

(in HK\$'000 以千港幣計)



Notes 備註: Reporting period is from 1 July 2019 to 30 June 2020.  
報告期為2019年7月1日至2020年6月30日

BU-Trace



Developed by Prof Xu Jianliang and his team in the Department of Computer Science, the BU-Trace System is a novel mobile app tailor-made for sending COVID-19 risks alert without the need to identify any individual users. The System will send an alert to the user through the mobile app if the user and a confirmed infected person have visited the same place within a 14-day period. The System does not collect user's personal information and location data, and hence there is zero privacy risk. The University has launched a pilot-run on campus starting from mid-October 2020. The research team has also worked with the Government to fight against the pandemic in Hong Kong.

新冠病毒風險警示系統BU-Trace



計算機科學系徐建良教授及其團隊研發的新冠病毒風險警示系統BU-Trace, 是一套創新的手機應用程式, 專門用於發送新冠病毒風險警報, 而毋須分辨用戶個人身份。如用戶曾與確診者在十四天內到訪同一地點, 系統將會透過手機應用程式向用戶發送警報。該系統不會收集用戶的個人資料和位置數據, 因此絕無隱私風險。程式在2020年10月中旬開始在校園內試行。研究團隊亦與政府合作, 應對香港的新冠病毒疫情。

Aria

Breathing life into big data and animated by children's imagination, Aria is an ethereal encounter of vocal performances, dance and immersive light installations in a night-time conservatory. Responsive to the ongoing pandemic and a new vision for what international productions may become, the path breaking promenade experience unites the Grammy and Pulitzer Prize-winning Theatre of Voices, appearing via hologram, the Hong Kong Children's Choir and cross-disciplinary artists in a song of air beyond the Anthropocene.

空氣頌

《空氣頌》糅合大數據與小孩子對空氣的想像, 邀請你踏入夜空下的城中溫室, 由演唱、舞蹈及光影引路, 穿越森羅萬象。格林美及普立茲得獎樂團「聲音劇場」以全像投影亮相, 與香港兒童合唱團及跨領域藝術工作者, 以新視野對應疫情下的地域界限, 隔空攜手, 譜出人類世以外的空氣之歌。



## International Connections 國際聯繫



### GUFA

Envisioned as the “University Oscars”, the Global University Film Awards (GUFA) have turned HKBU’s Academy of Film at the School of Communication into an international hub for young filmmakers. GUFA 2020 attracted more than 2,500 submissions from over 100 countries and regions. The event, which pressed on despite the pandemic, included online screenings of over 100 productions, allowing aficionados from every continent to celebrate the art of film.

### 全球大學電影獎

被譽為「學界奧斯卡」的全球大學電影獎讓香港浸會大學傳理學院下的電影學院一躍而成年輕電影人的國際交流中心。全球大學電影獎2020吸引了來自100多個國家和地區的2,500多部參賽作品。儘管疫情持續，活動仍如期進行，包括舉行逾百部作品的線上電影放映會，讓來自世界各地的電影愛好者可以觀摩電影藝術。

## Knowledge Transfer and Entrepreneurship 知識轉移及創業



Patents

31

No. of Patents Filed  
專利登記數目

35

No. of Patents Granted  
獲授予的專利數目

85

No. of licenses Granted  
獲授予的技術授權數目



Income

(in HK\$'000  
以千港幣計)

HK\$ 19,811

Income of Collaborative Research  
協作研究收入

HK\$ 123,694

Income of Contract Research  
合約研究收入

HK\$ 15,044

Income of Consultancies  
顧問服務收入

HK\$ 129,453

Income of Continuing Professional Development (CPD) Courses  
持續專業發展課程收入

HK\$ 81,456

Net Income (on cash basis) generated from intellectual property rights including the income from start-ups  
知識產權衍生的淨收入（以現金為基礎），包括初創企業的收入



89

No. of entrepreneurship activities  
創業活動數目



8,502

No. of student participation in entrepreneurship activities  
參與創業活動的學生人數

Notes 備註: Reporting period is from 1 July 2019 to 30 June 2020.  
報告期為2019年7月1日至2020年6月30日

STRATEGIC PRIORITY 優先策略

# 3 Capacity 增強實力



## Talent100 人才100

HKBU is committed to enhancing world class interdisciplinary research that would influence public thinking and policy making. To maintain its relevance to society and ensure continuance of its contributions to the creation and transfer of knowledge for the benefit of all, HKBU is purposefully investing resources to implement a comprehensive plan of action, including the Talent100 initiative. We are now recruiting faculty members for positions from the level of Assistant Professor to Professor in the next few years, with research focus on our key strategic areas. With the University-wide interdisciplinary research labs established and additional funding secured, we are further developing this initiative with a strategic focus on hiring talents under the different interdisciplinary themes.

浸大致力提升世界級的跨學科研究，並以成果影響公共思維及政策制定。為了繼續緊貼社會的脈搏，確保浸大能在創造及轉移知識上持續貢獻社會，本校銳意投資資源，落實包括「人才100」在內的全面行動方案。大學於未來數年內，將物色符合本校重點研究領域的人才，繼而招聘助理教授至教授職級的精英。隨著大學成立跨學科研究實驗室並獲得額外資金，我們正將該計劃進一步發展，有策略地於不同跨學科主題下招聘人才。



Please refer to the Talent100 website for details.  
如欲了解詳情請參閱「人才100」網站。

## Staff 職員



## Place of Origin of Professoriate Staff 教授級人員之出生地



Notes 備註: The staff figures exclude staff of the School of Continuing Education 不包括持續教育學院職員  
All staff figures are as of 31 October 2019 教職員人數以2019年10月31日為準

## Campus Development 校園發展

The Jockey Club Campus of Creativity will boast four blocks of residential colleges that form the Village CARE (Creative Arena for Residential Education) plus the Jockey Club Creative Hub featuring state-of-the-art facilities for music, film, television, video games and other creative disciplines.

賽馬會創意校園將包括由四座住宿書院組成的CARE舍堂村，以及一個專為音樂、電影、電視、電子遊戲及其他創意領域而設、配備最先進設施的賽馬會點子坊。

The new campus will stand as a towering icon of creativity education and also an icon of new living-learning communities delivering the best student experience and enhancing the University's research excellence as set out in its Institutional Strategic Plan 2018-2028.

新校園將配合浸大的策略發展計劃(2018-2028)，成為具標誌性的創意教育基地，以及全新的住宿-學習社群，提供最佳學習體驗，並提升大學的卓越研究水平。



### Location 位置

30 Renfrew Road, Kowloon Tong, Kowloon (the northern portion of the former campus of the Hong Kong Institute of Vocational Education (Lee Wai Lee)) 九龍塘聯福道30號(前香港專業教育學院(李惠利校舍)北面用地)



### Student activity space 學生活動空間

1,900 sq.m.  
1,900 平方米



### Academic space 教學空間

5,000 sq.m.  
5,000 平方米



### Site area 土地面積

0.75 hectare (7,500 sq.m.)  
0.75 公頃(7,500平方米)



### Funding 資助

Hostel Development Fund from the Government, private funds from the University, as well as a HK\$452 million donation from The Hong Kong Jockey Club Charities Trust 政府的宿舍發展基金撥款、大學的私人募捐及香港賽馬會慈善信託基金撥出港幣4.52億元捐款



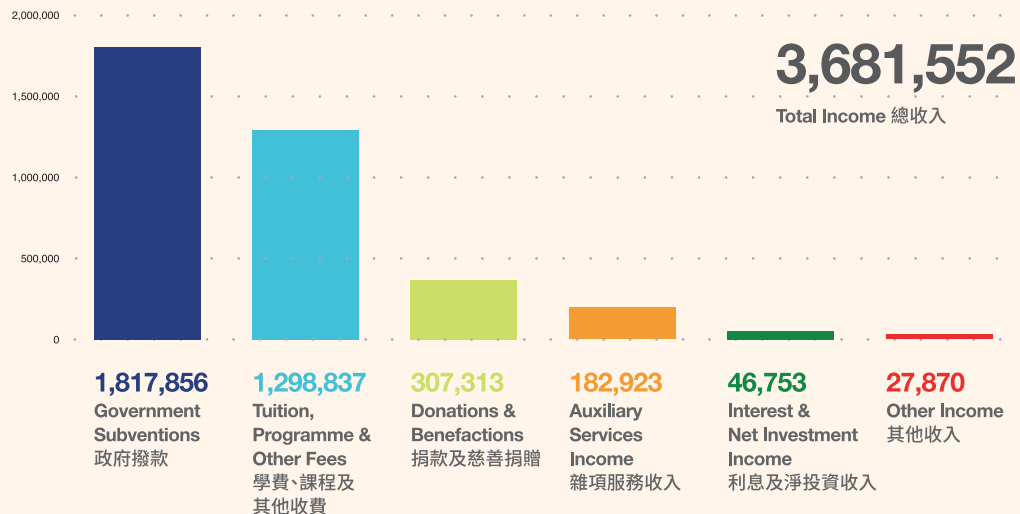
### Hostel places 宿位

1,726 bed places  
1,726 個宿位

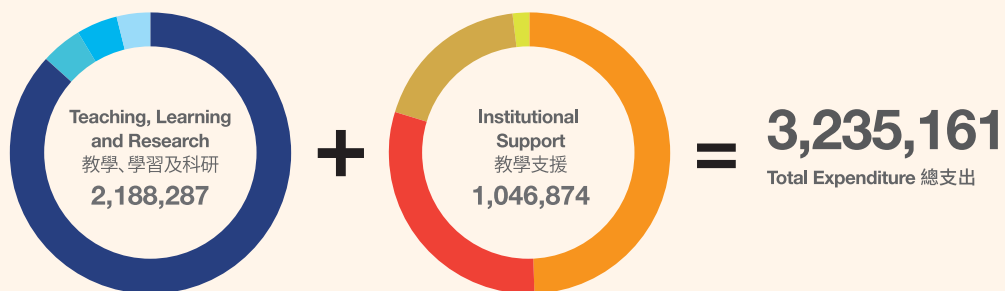


## Income and Expenditure 收入與支出

### Income 收入 (in HK\$'000 以千港幣計)



### Expenditure 支出 (in HK\$'000 以千港幣計)



**1,899,585**  
Teaching and Research 教學及科研

**103,056**  
Central Computing Facilities 中央電腦設施

**98,994**  
Other Academic Services 其他教學服務

**86,652**  
Library 圖書館

**516,696**  
Premises and Related Expenses 校舍及有關開支

**319,285**  
Management and General 管理及一般支出

**193,051**  
Student and General Education Services 學生及一般教育服務

**17,842**  
Other Activities 其他活動

## Campuses 校園



Beijing Normal University-Hong Kong Baptist University United International College (UIC) in Zhuhai  
北京師範大學-香港浸會大學聯合國際學院(位於珠海)



Ho Sin Hang Campus, Shaw Campus and Baptist University Road Campus  
善衡校園、逸夫校園和浸會大學道校園



Shek Mun Campus  
石門校園



Tsuen Wan Campus  
荃灣校園



Kai Tak Campus  
啟德校園

## Library Collections and Facilities 圖書館館藏及設施

### Library Collections 圖書館藏量

#### Kowloon Tong Campus 九龍塘校園

#### Shek Mun Campus 石門校園



#### Volumes 藏書 (冊)

1,183,427

51,867



#### Audio-visual Materials and Microforms 視聽及縮微資料 (件)

128,873

6,219



#### Serials (active periodical titles) 現刊 (種)

2,228

65

### Library Facilities 圖書館設施



#### Study Places 閱覽座位

1,391

464

### Electronic Resources 電子資源

#### All Campuses 所有校園



#### E-Books 電子書籍

1,447,027



#### E-Journals 電子期刊 \*

185,047



#### E-Databases 電子數據庫

395



For more information on our Library, please visit  
如欲了解有關本校圖書館的詳情,請瀏覽

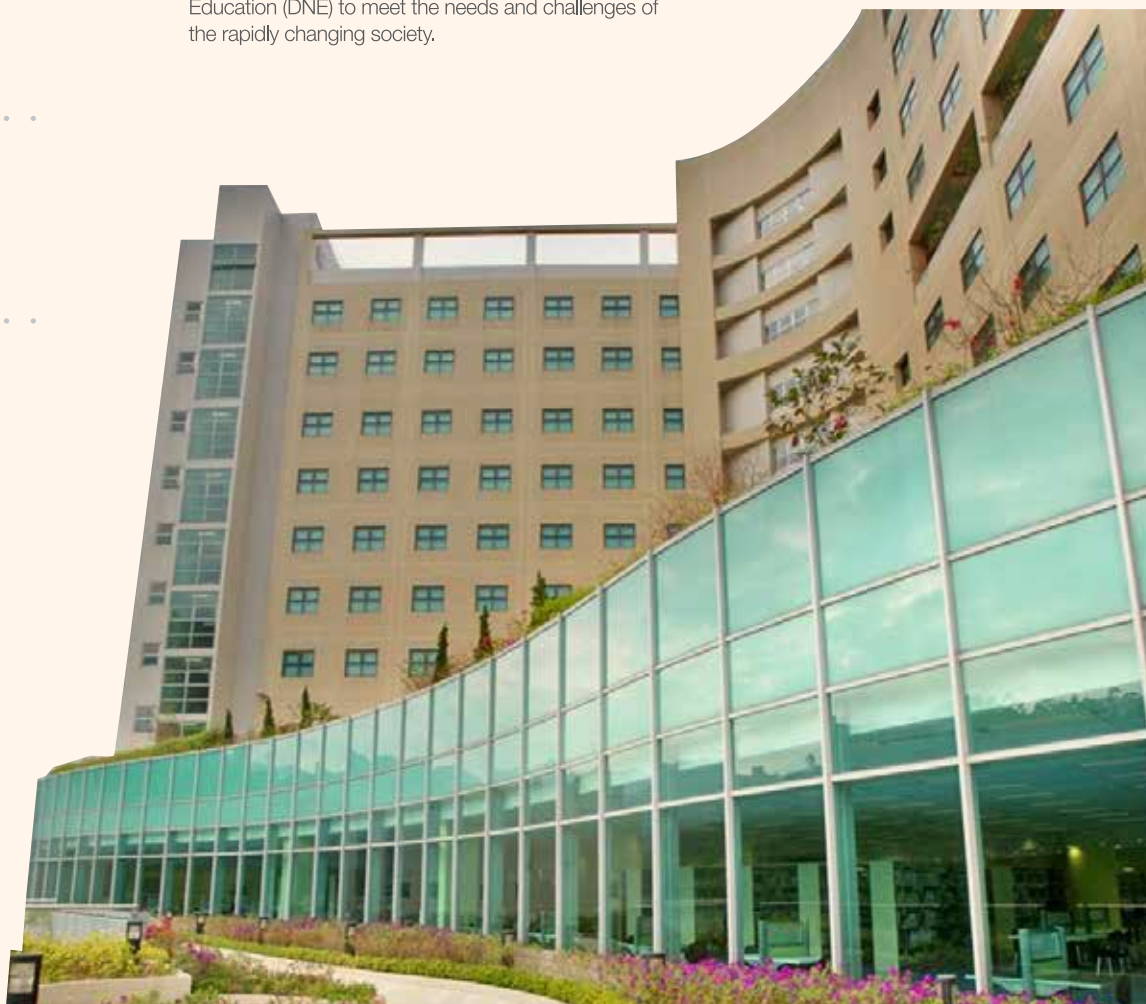
Notes 備註: \* Refers to the total number of current e-journal subscriptions \* 依據電子期刊訂購的數目  
Statistics were updated as of 30 June 2020 統計數據以 2020 年 6 月 30 日為準

## 持續教育學院

## School of Continuing Education

Established in 1975, the School of Continuing Education (SCE) of Hong Kong Baptist University (HKBU) endeavours to serve those who aspire to learn, offering opportunities and options to equip them for further studies or employment. It offers a wide range of full-time and part-time programmes with multi-faceted teaching approaches incorporated through its College of International Education (CIE), Continuing and Professional Education Division (CPED), Early Childhood and Elementary Education Division (ECEED) as well as Division of Nursing Education (DNE) to meet the needs and challenges of the rapidly changing society.

香港浸會大學持續教育學院成立於1975年, 致力為有志進修的人士提供各種機會和選擇, 協助他們打穩升學或就業的根基。學院轄下的國際學院、持續及專業教育部、幼兒及基礎教育部以及護理教育部提供不同學科的全日制及兼讀制課程, 並融入多元教學, 以配合社會迅速發展下各方面的需求及挑戰。



## Student Enrolment by Programme 以課程類別分類之學生人數



### HKBU Award Programmes 由浸大頒授畢業證書之課程

85

Postgraduate Diploma  
深造文憑課程

2,236

Undergraduate  
學士學位課程 #

2,623

Associate Degree  
副學士課程

518

Higher Diploma  
高級文憑課程

### HKBU SCE Award Programmes (Full-time) 持續教育學院全日制課程

566

Diploma Yi Jin  
毅進文憑

282

Diploma of College Foundation Studies  
大專基礎教育文憑

### HKBU SCE Award Programmes (Part-time) 持續教育學院兼讀制課程

2,302

Certificate / Diploma\*  
證書及文憑課程

### Collaborative Programmes 合辦課程

170

Taught Postgraduate  
高等學位修讀課程

177

Undergraduate  
學士學位課程

### Part-time Short Courses 短期課程

859

Course Enrolment  
報讀人次

Gender Distribution  
男女生比例



Male 43.3%



Female 56.7%

Notes 備註:  
Includes students in HKBU Award and SCE Award Programmes (Full-time).  
包括由浸大頒授畢業證書之課程及持續教育學院全日制課程的學生

- Notes 備註:
- Student enrolment figures are as of 31 December 2019.
  - Course enrolment for part-time short courses are from July 2019 to June 2020.
  - # Includes College of International Education top-up undergraduate programmes.
  - \* Certificate / Diploma includes Advanced Certificate, Advanced Diploma, Certificate, Diploma, Professional Certificate and Professional Diploma programmes.

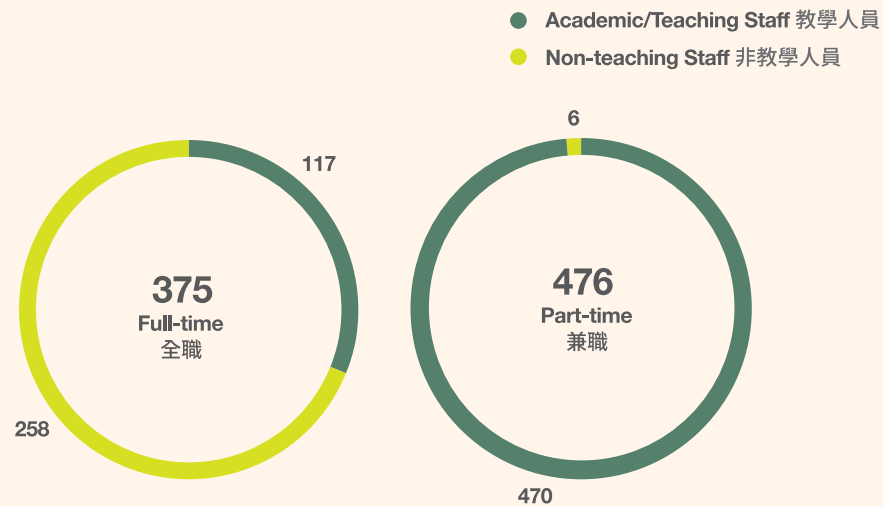
- 學生人數統計截至2019年12月31日
- 兼讀制短期課程的課程註冊期為2019年7月至2020年6月
- # 包括國際學院銜接學位課程
- \* 證書/文憑課程包括高等證書、高等文憑、證書、文憑、專業證書和專業文憑課程

## Number of Graduates (HKBU Award Programmes) 畢業生人數 (由浸大頒授畢業證書之課程)



Notes 備註: Graduate figures are as of September 2020. 畢業生人數統計截至2020年9月  
# Includes College of International Education top-up undergraduate programmes. # 包括國際學院銜接學位課程

## Staff 職員



Notes 備註: Staff figures are as of 31 October 2019.  
教職員人數以2019年10月31日為準



# Major Milestones

## 里程碑

### 1956

Hong Kong Baptist College was founded by the Baptist Convention of Hong Kong as a private post-secondary institution. The College was housed in borrowed facilities at Pui Ching Middle School, also a Baptist institution

香港浸信會聯會創辦私立專上學院「香港浸會書院」，並借用同屬浸信會的培正中學校址上課

### 1970

The College was recognised by the Government as Hong Kong's first privately run four-year post-secondary institution

浸會書院成為香港第一間政府承認的私立四年制專上學院

### 1983

The College was brought under the aegis of the University and Polytechnic Grants Committee, now the University Grants Committee, as a fully-funded public tertiary institution

獲大學及理工教育資助委員會（現稱大學教育資助委員會）資助，正式成為公立高等學府



### 1966

The College's permanent campus on Waterloo Road was completed

浸會書院位於窩打老道的校舍落成

### 1981

The United Kingdom Council for National Academic Awards validated Hong Kong Baptist College's diploma programmes and affirmed its potential to offer bachelor's degree courses

英國國家學歷評審局確認本校具備發展學位課程的潛力

### 1994

Hong Kong Baptist College was officially renamed Hong Kong Baptist University

香港浸會學院正名為香港浸會大學

## 1995

The second campus, the Shaw Campus, was completed on Renfrew Road. The Waterloo Road campus was renamed Ho Sin Hang Campus

聯福道逸夫校園落成。  
窩打老道校舍易名為善衡校園

## 2005

The fourth campus, Kai Tak Campus on Kwun Tong Road, was established to house the Academy of Visual Arts

觀塘道啟德校園啓用，  
成立視覺藝術院

## 2006

The fifth campus, Shek Mun Campus in Sha Tin, was completed to house the College of International Education, which runs associate degree programmes and self-funded degree programmes

沙田石門校園國際學院開幕，提供  
副學士及自資學士學位課程

## 2020

Construction of the Jockey Club Campus of Creativity started in the second quarter of 2020 and is due for completion in 2024. The new campus will stand as a towering icon of creativity education

賽馬會創意校園興建工程於2020年第二季開始，預計於2024年完工。新校園將成為具標誌性的創意教育基地



## 1997

The third campus, Baptist University Road Campus, was established

浸會大學道校園落成

## 2005

Beijing Normal University – Hong Kong Baptist University United International College, the first full-scale collaboration in higher education between Hong Kong and Mainland China, was established in Zhuhai

全國第一所由內地與香港院校合辦的大學「北京師範大學－香港浸會大學聯合國際學院」於珠海成立

## 2013

Approved by the Ministry of Science and Technology, The State Key Laboratory of Environmental and Biological Analysis (Hong Kong Baptist University) was established

獲國家科學技術部批准，成立「環境與生物分析國家重點實驗室」